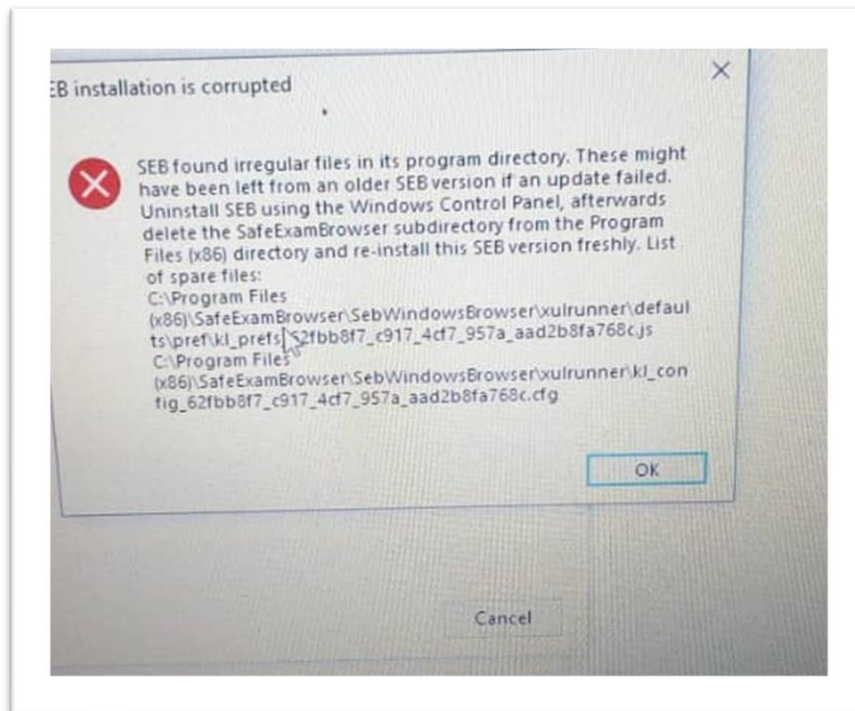
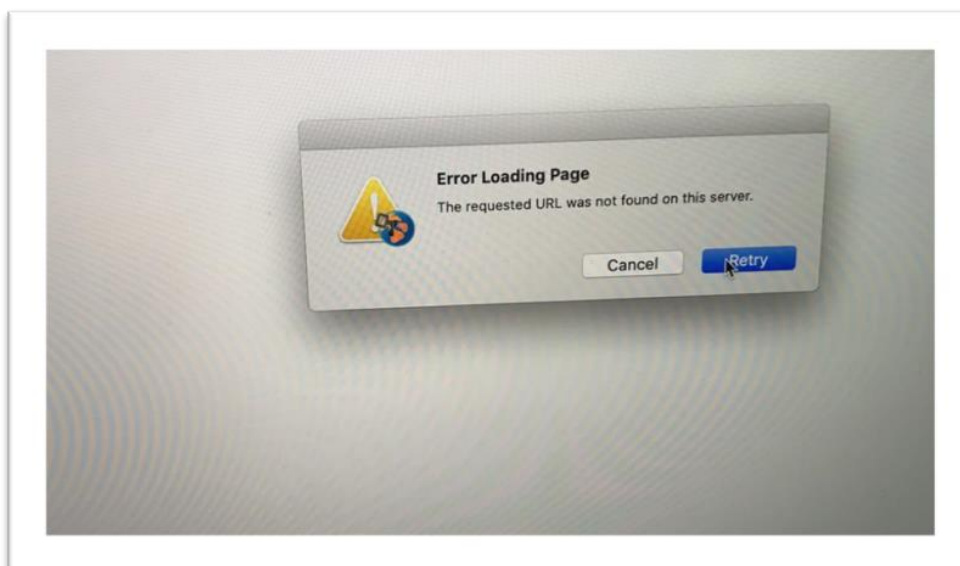


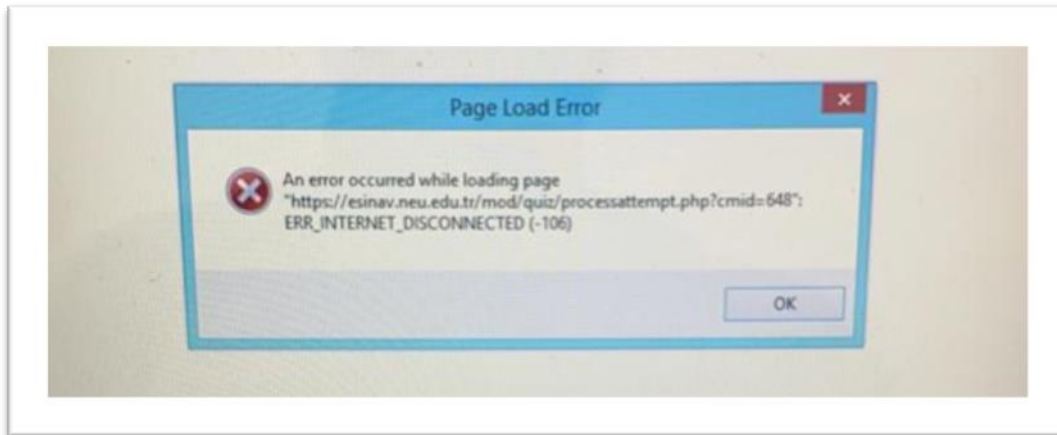
FAULTS AND SOLUTION RECOMMENDATIONS ABOUT SEB



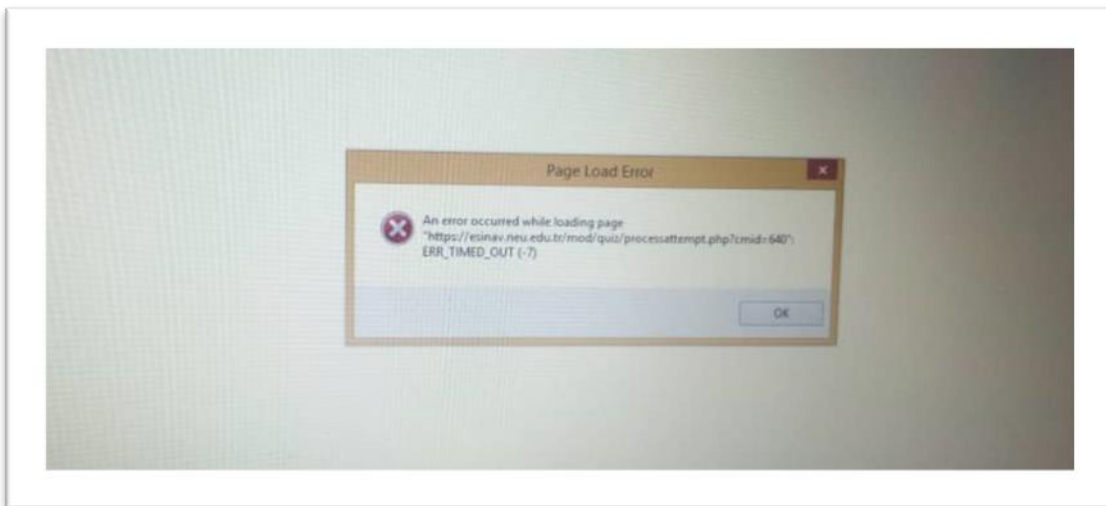
1. When you run SEB, if you see the error mentioned above, remove your installed SEB file and application. This error is a warning that **SEB is not installed correctly** and all files must be uploaded completely. You can run SEB by reinstalling it.



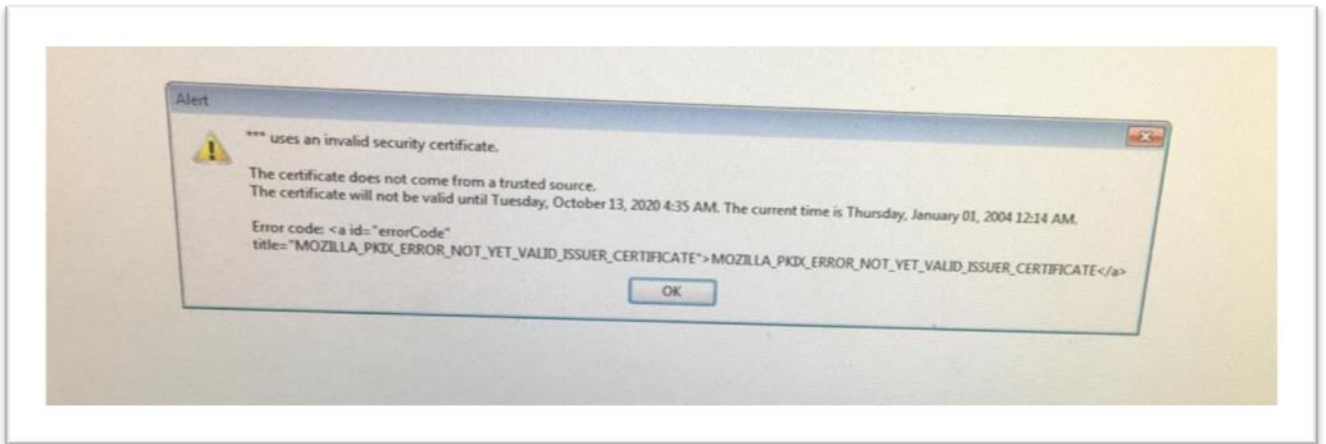
2. When you see the above error while SEB is running, it indicates that your internet connection has been interrupted and that you will continue after you have made your connection. You can continue where you left off by checking your internet connection. **(MAC)**



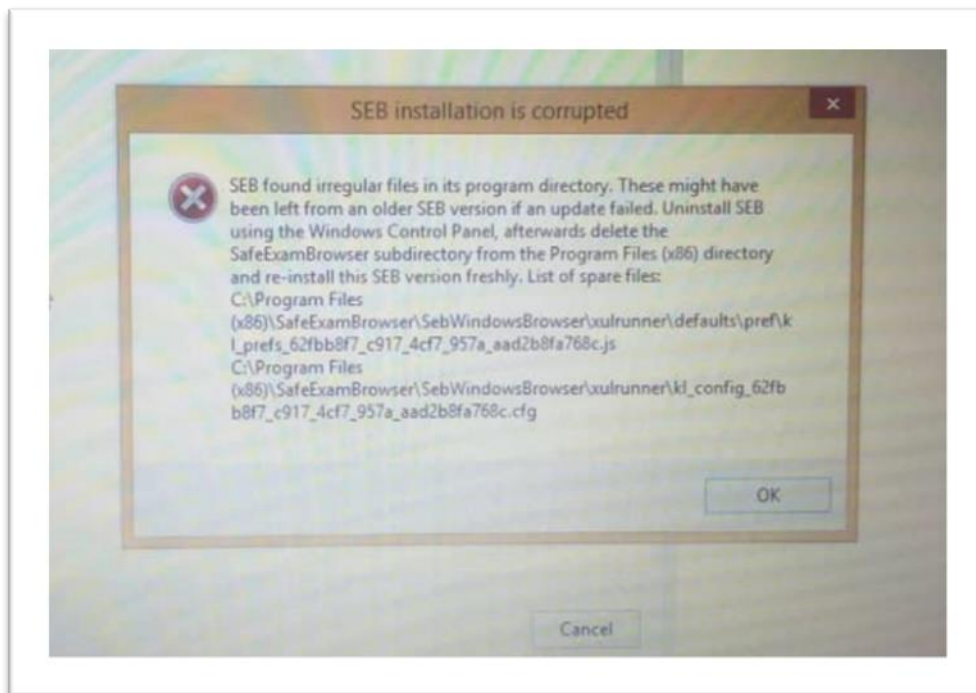
3. When you see the above error while SEB is running, it indicates that your internet connection has been interrupted and you will continue after you have made your connection. You can continue where you left off by checking your internet connection. **(WINDOWS)**



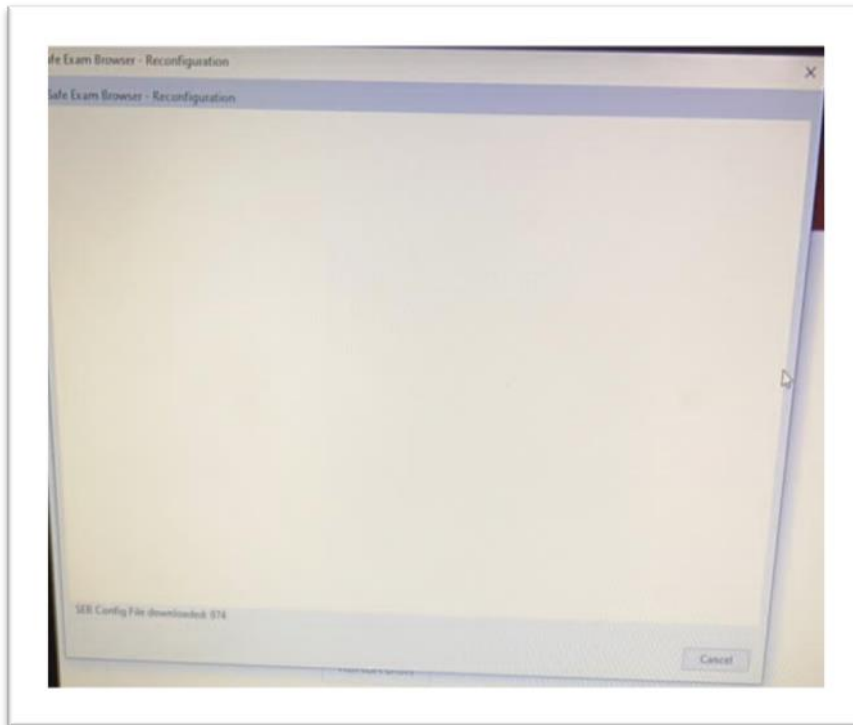
4. When you see the above error while SEB is running, it indicates that your internet connection has been lost and you will continue after you have made your connection. You can continue where you left off by checking your internet connection. **(WINDOWS)**



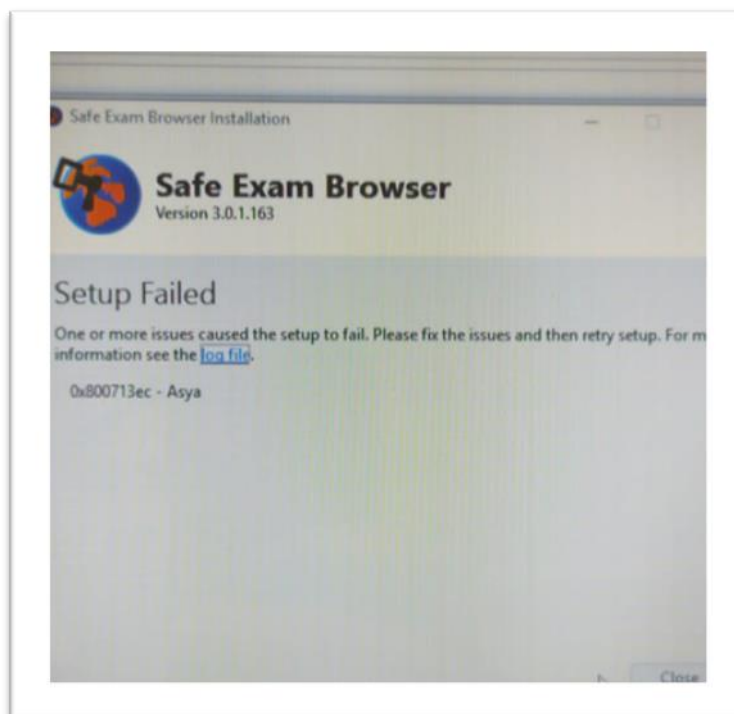
5. When you see the above error while running SEB, you need to close your antivirus program. This warning indicates that there is a conflict between SEB and antivirus program. Turn off your firewall, close your antivirus program and re-install SEB and run it.



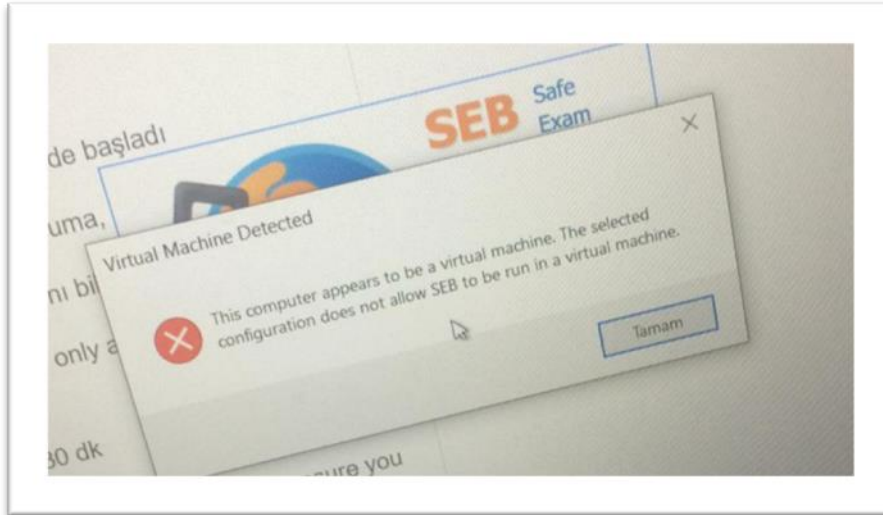
6. If you see the error mentioned above when you run SEB, remove your installed SEB file and application. This error is a warning that **SEB is not installed correctly** and all files must be uploaded completely. You can run SEB by reinstalling it.



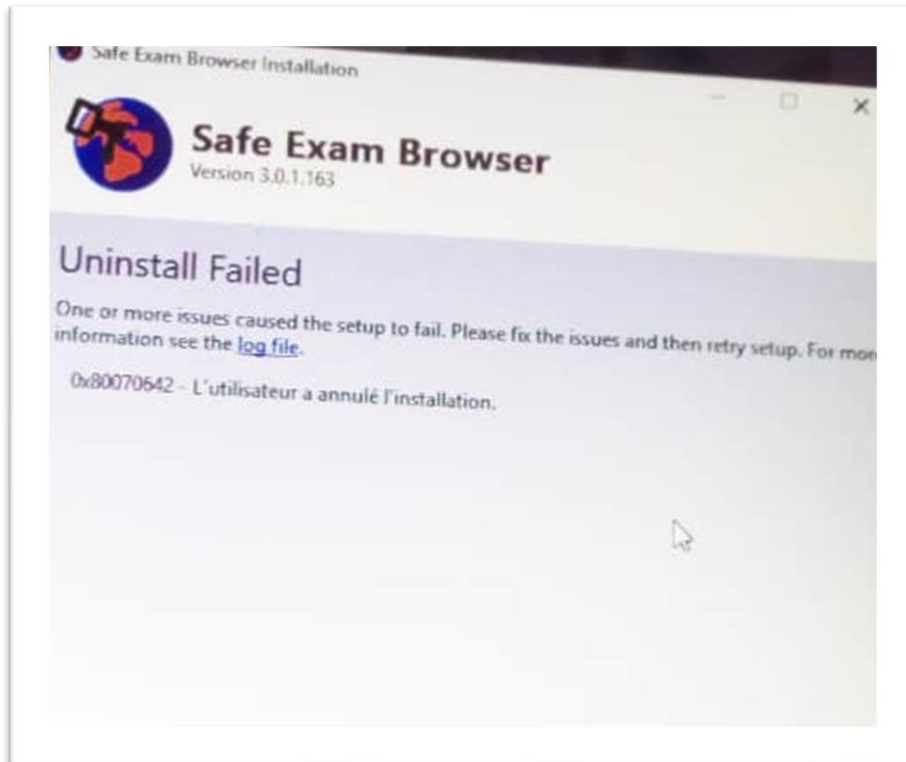
7. **(IMPORTANT)** If you see the error mentioned above when you run SEB, it shows that the installed SEB is not correct. **If you have installed SEB3.1, uninstall and install 2.4.1.** Likewise, **if you have installed 2.4.1 SEB version, install 3.1 version of SEB.**



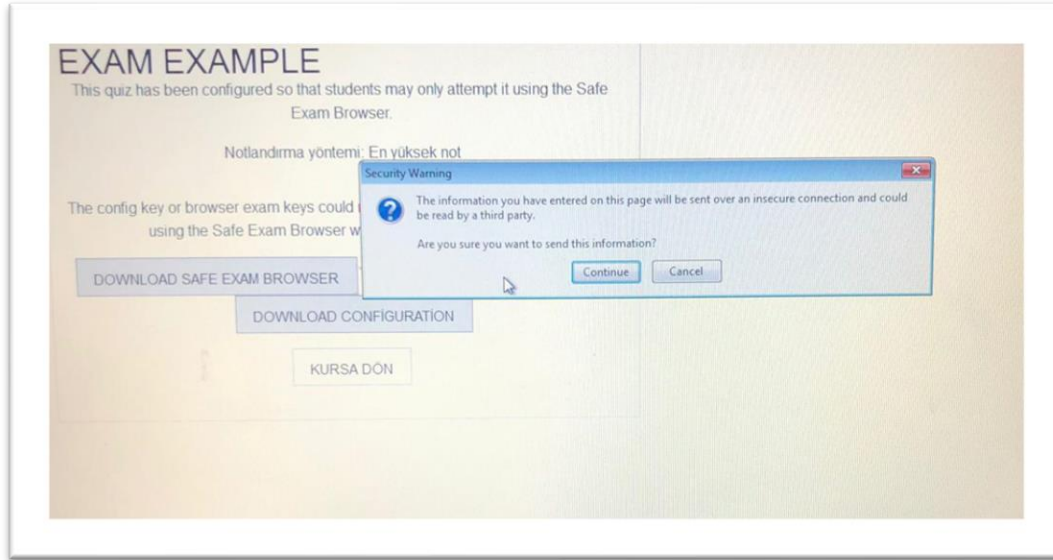
8. When you see the above error while running SEB, you need to close your antivirus program. This warning indicates that there is a conflict between SEB and antivirus program. Turn off your firewall, close your antivirus program and re-install SEB and run it.



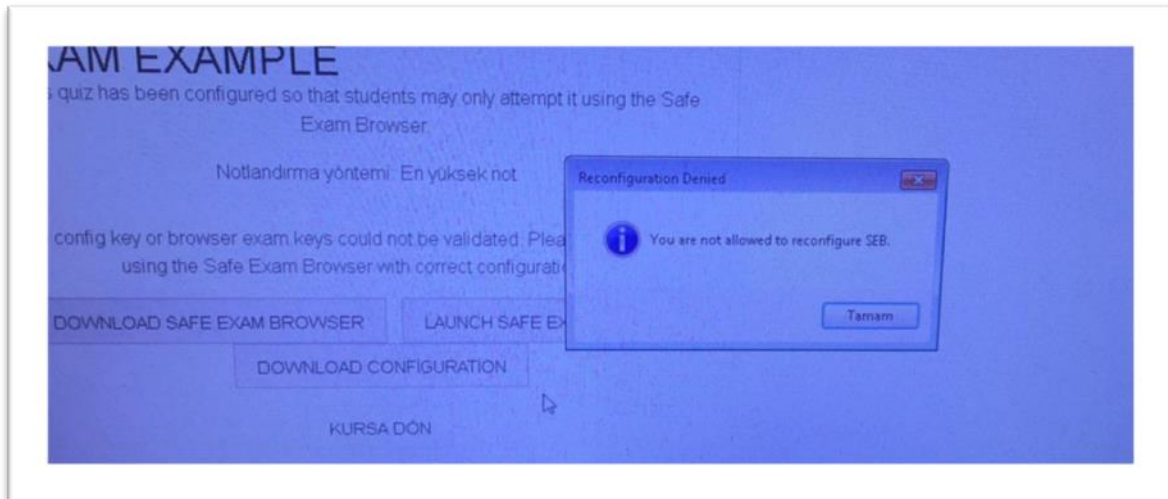
9. When you see the above error while running SEB, it warns that the program is not working properly on the computer. In this case, uninstall the installed SEB and install it again.



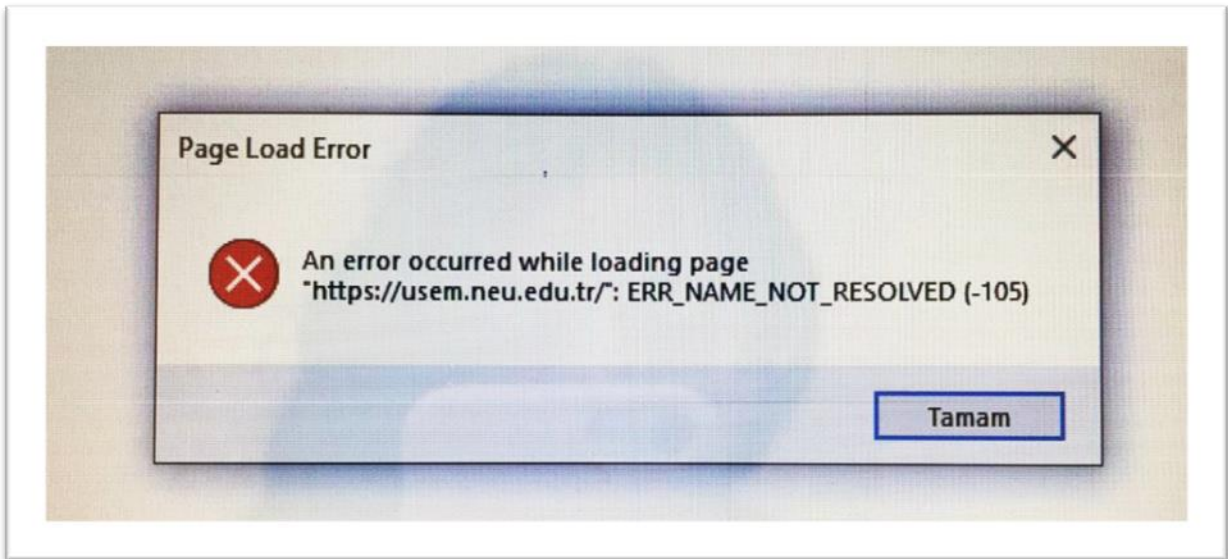
10. When you see the above error while running SEB, **you need to close your antivirus program.** This warning indicates that **there is a conflict between SEB and antivirus program.** Turn off your firewall, close your antivirus program and re-install SEB and run it.



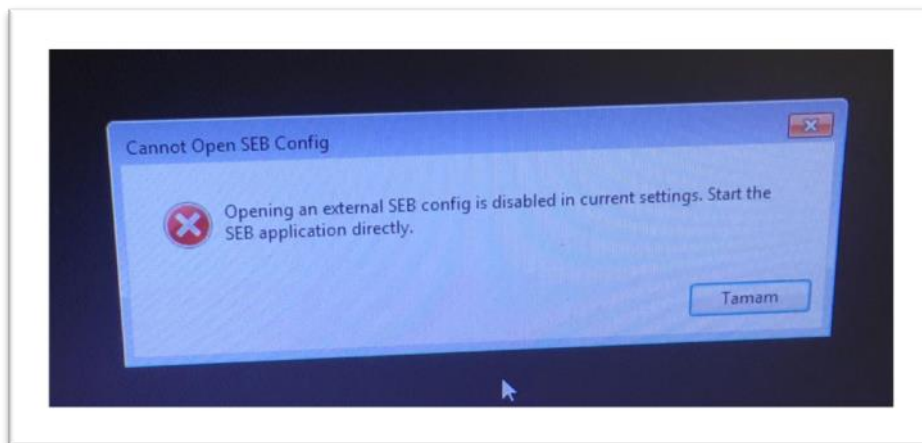
11. When you see the above error when trying to apply the exam with SEB, select **“Continue”**, which is the continue option.



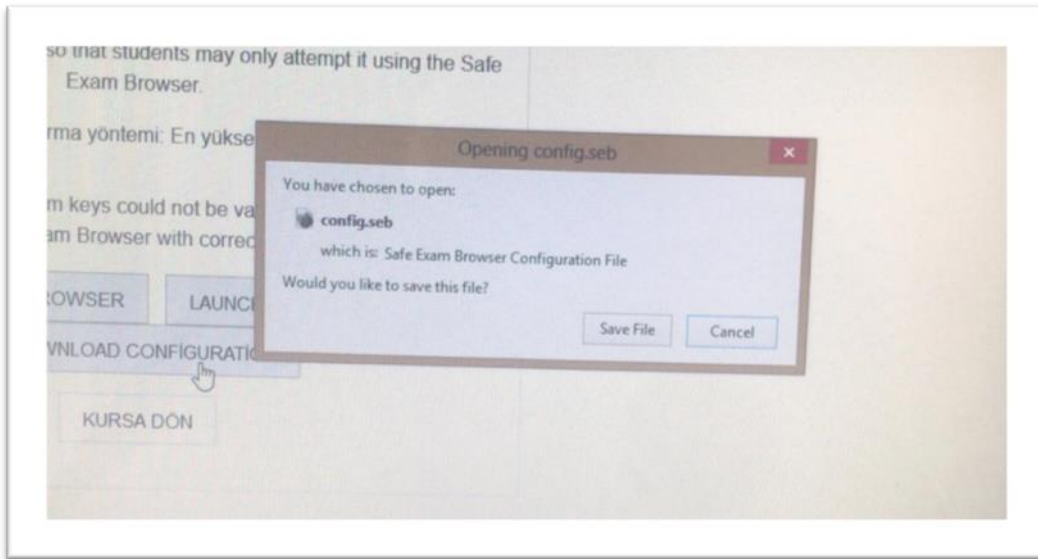
11. The error mentioned above is the "reconfigure SEB" warning. Continue this option by saying **“OK”** and start applying your exam by selecting **“Launch Safe Exam Browser”**.



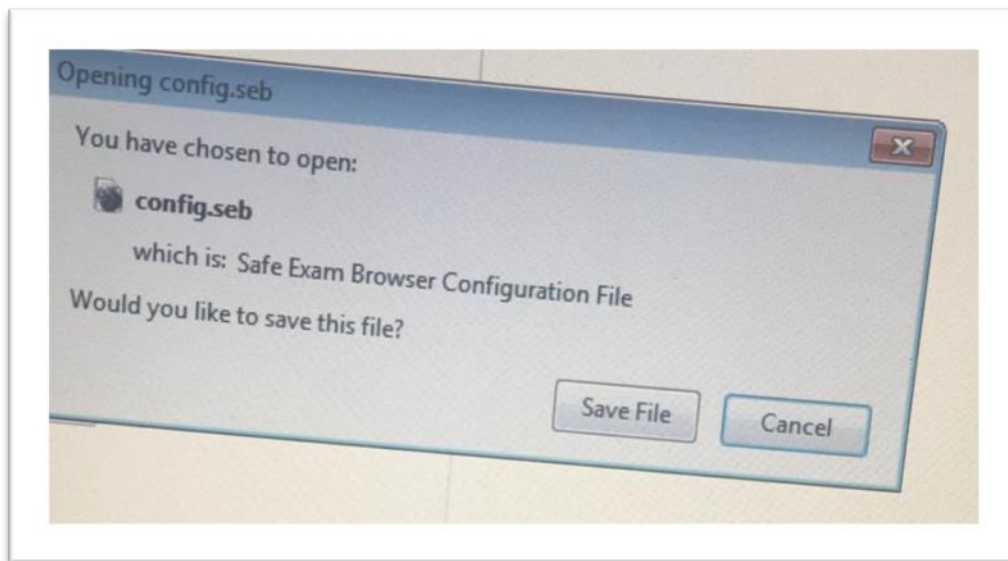
12. The above-mentioned error "**SEB Configuration Tool**" is a warning that the address of the UZEBIM system is misspelled in the **START URL** section. When you see this warning from the **SEB Configuration Tool** application to the address section in the **START URL** section <https://uzem.neu.edu.tr> you can run SEB by typing / address.



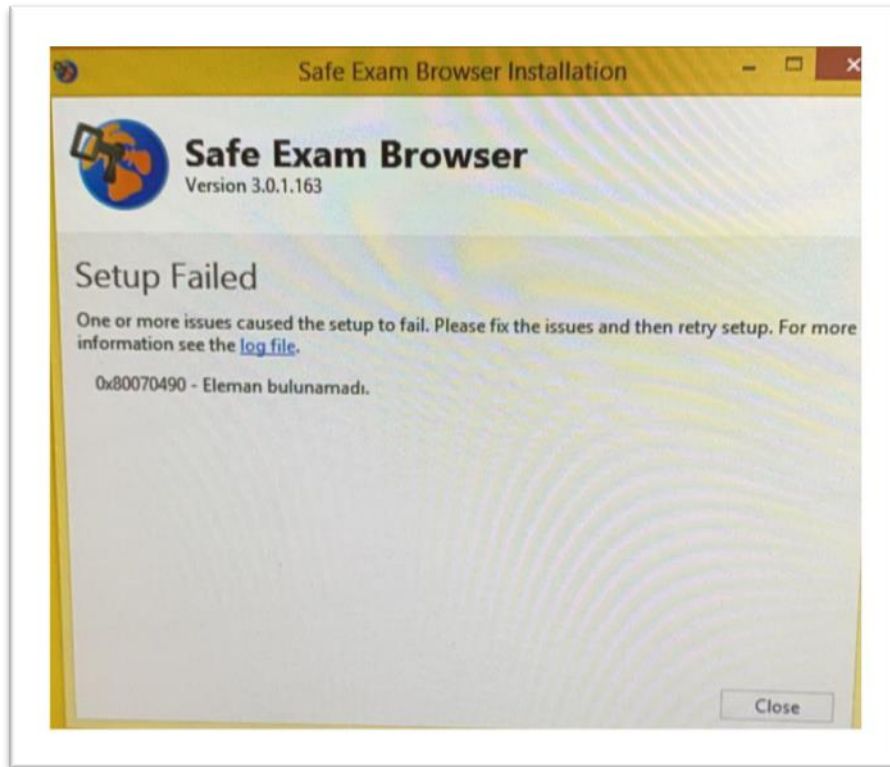
13. The warning above is the warning "**Don't Run Exam File Without SEB Installed**". **Reports that you cannot view the exam file without opening SEB.** You can view the exam file by opening your SEB application.



14. The warning mentioned above is the **"Save SEB File"** warning. You can continue with this option by saying **"Save File"** and at the same time, you can start to apply your exam by selecting the **"Launch Safe Exam Browser"** option.



15. Above mentioned warning is **"Save SEB File"** warning. You can continue with this option by saying **"Save File"** and at the same time, you can start to apply your exam by selecting the **"Launch Safe Exam Browser"** option.



16. When you see the above error while running SEB, **you need to close your antivirus program.** This warning indicates that **there is a conflict between SEB and antivirus program.** Turn off your firewall, close your antivirus program and re-install SEB and run it.